

CASA 6



RESERVA

HACIENDA DE MITA

An aerial photograph of the Punta Mita resort in Mexico. The image shows a lush green peninsula with a golf course, several large resort buildings, and numerous smaller villas. The resort is surrounded by turquoise water with white waves crashing against the shore. In the background, there are more mountains and a small town. The sky is filled with large, white clouds.

“PUNTA MITA IS THE ULTIMATE LUXURY TRAVEL DESTINATION”
- FORBES



LOCATION

RESERVA 6 is centrally located in Punta Mita and all the area has to offer. Guests enjoy direct access to town via a gated walking path, access to the private Hacienda de Mita beach club on Anclote beach.

CASA 6

RESERVA



CASA 6

THE CROWN JEWEL

RESERVA 6 is without a doubt the most extraordinary villa of this enclave of six homes in the middle of Punta Mita. Its location, access to town, design, lot, views and value make it easily one of the most desirable homes in Punta Mita.

The property borders the Pacifico Golf Course's magical 7th hole that spills into the Bay of Banderas and is twice the size of the other RESERVA lots. With no neighbor on one side, the architects were able to position every suite at an optimal angle to capture views of the spectacular par 5 hole. Each one of the five main bedrooms has stunning golf course and bay views.

The estate includes beautiful indoor and outdoor living areas to entertain comfortably throughout the year. The wrap around pool creates a tangible sense of relaxation and perfectly frames the magnificent views of the golf course, Bay of Banderas and the Sierra Madre mountain range.

One of the most distinctive features of the property is the variety and quality of the different living spaces. The thoughtful design allows for enjoyment, entertainment, and connection – while still providing utmost privacy for all guests when desired. The local artisans have brought their superior craftsmanship to the project, resulting in a unique and finely finished home.



PROJECT FEATURES

"The perfect family estate with enough space to entertain two families and friends."

RESERVA incorporates thoughtful design, high quality materials, and the latest technologies, with a commitment to energy efficiency and sustainability.

Features and technologies include:

- Sonos music system
- Lutron light management system
- LED lighting
- Energy Star appliances
- Central air conditioning
- Double pane windows
- Efficient irrigation system
- Grey water recycling system

CASA 6
AERIAL VIEW



The main house is anchored by an outdoor palapa that is the heart of the home. Most of the year this is the perfect place to entertain al fresco in its comfortable living and dining areas.

MAIN HOUSE
VIEW FROM GARDEN



Inspired by the traditional architecture of Mexico, in the '60s architects began incorporating palapa roofs into contemporary beach homes on the Pacific coast of Mexico. The inspiring beauty of the structure and cooling properties of the natural materials truly enhance beachfront living.



PALAPA
VIEW FROM POOL



OUTDOOR
LIVING PALAPA



The pond is at the core of the property and is bordered by the family room, walkway, palapa, main house and gardens. Guest suites 2 and 3 are accessed from the walkway, as is the rooftop terrace with Jacuzzi. The privacy provided by the treetops of the neighboring golf course and the peaceful ambience of the pond make this a special place to relax or entertain.

POND, MAIN HOUSE AND PALAPA



RESERVA reflects contemporary Mexican architecture in harmony with the natural surroundings and beauty. Wellness, energy efficiency, and sustainability have been integrated into all aspects of the architecture and design.

Each home incorporates excellent design, high quality craftsmanship and good taste.



ENTRANCE
PATIO



ROOFTOP
JACUZZI



On warmer summer days, or occasionally at night, guests will appreciate the air-conditioned indoor living area with its spacious, practical layout.



INDOOR
LIVING ROOM



The open kitchen smoothly integrates with the dining and living area. For convenience, there is a prep kitchen in the back where staff can discretely prepare meals and refreshments. There is also a large laundry room, and a staff bedroom when the occasion calls for an overnight stay.



LIVING ROOM
& KITCHEN



The airy master bedroom has both a front balcony and an expansive side terrace, including a large shaded area with a daybed, in addition to sun deck space. The master bed floats within the generous room and has office space in the back and a living area in the front.



MASTER
BEDROOM



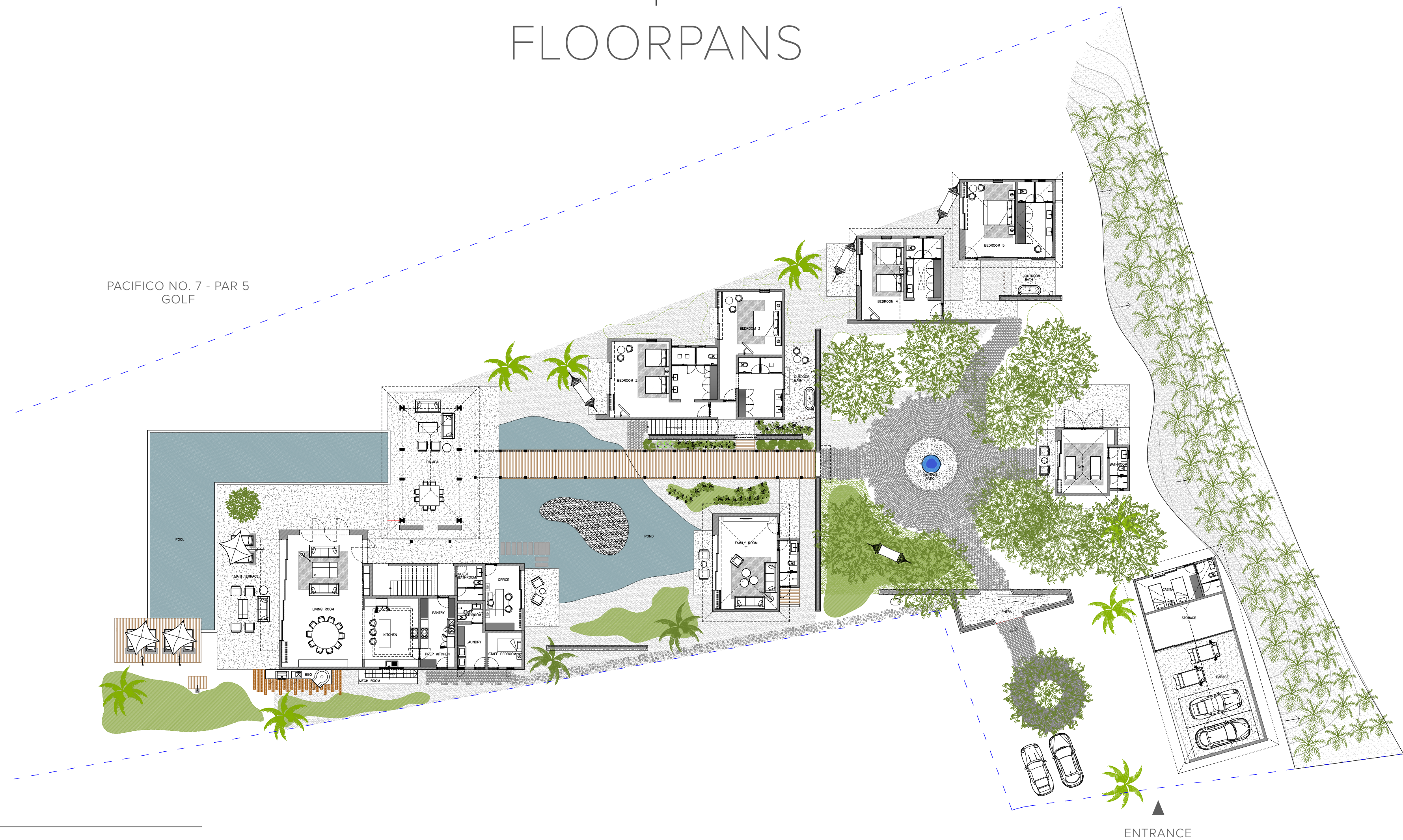
The master bath behind features a private terrace with daybeds overlooking the pond area, plus an outdoor shower. The bathroom has a large closet with a carved, single-piece marble bathtub, double showers, double vanities, enclosed WC and steam room.

MASTER
BATH



BEDROOM
4

FLOORPANS

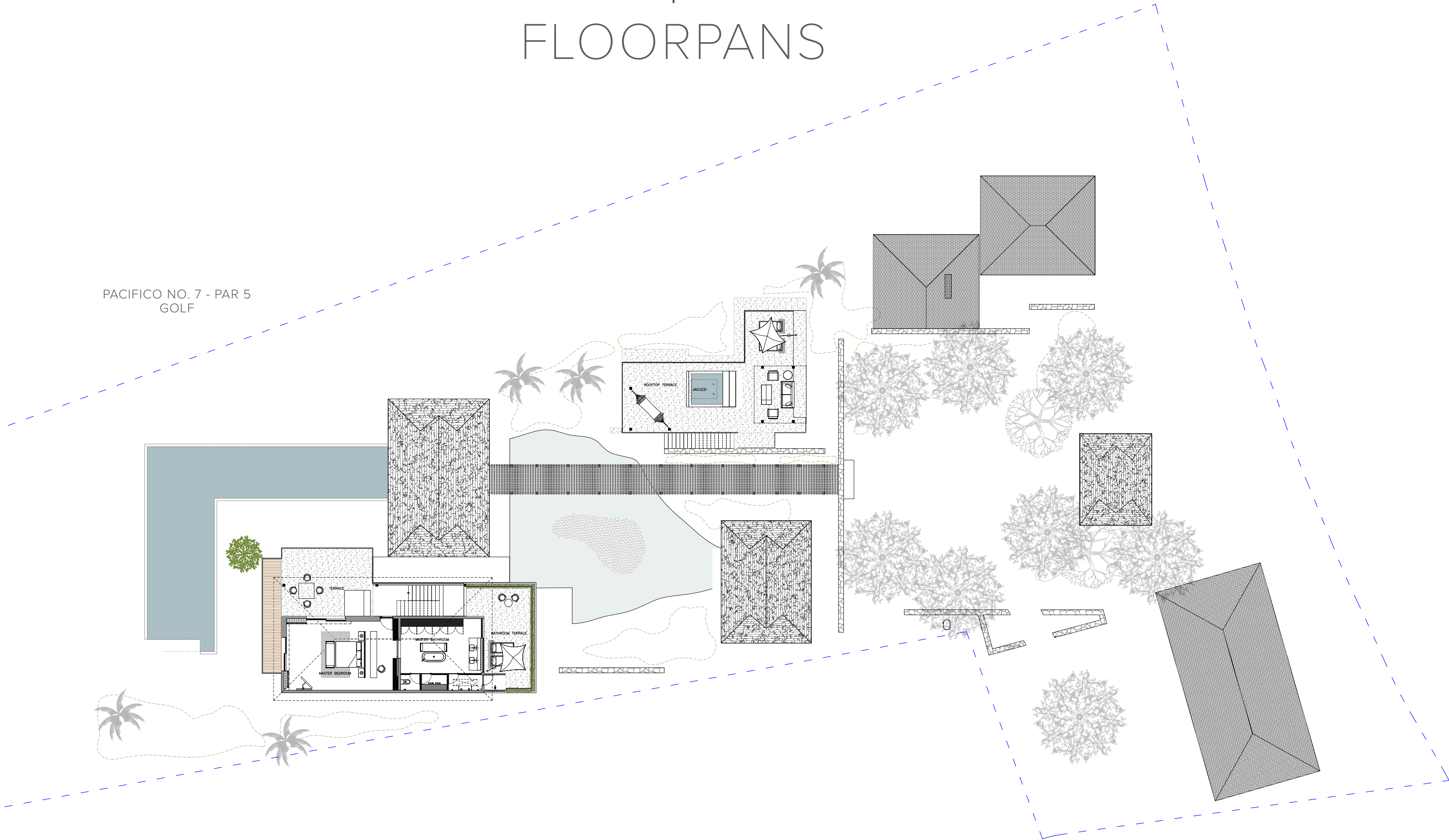


Approximate Areas	Square meters	Square Feet
LOT	4,518 SM	1.11 ACRES
CONSTRUCTED	1,765 SM	18,998 SFT
A/C AREA	503 SM	5,414 SFT

GROUND LEVEL



FLOORPANS



Approximate Areas	Square meters	Square Feet
LOT	4,518 SM	1.11 ACRES
CONSTRUCTED	1,765 SM	18,998 SFT
A/C AREA	503 SM	5,414 SFT

UPPER LEVEL



Look & Feel

(Finishes Reserva Casa 1)















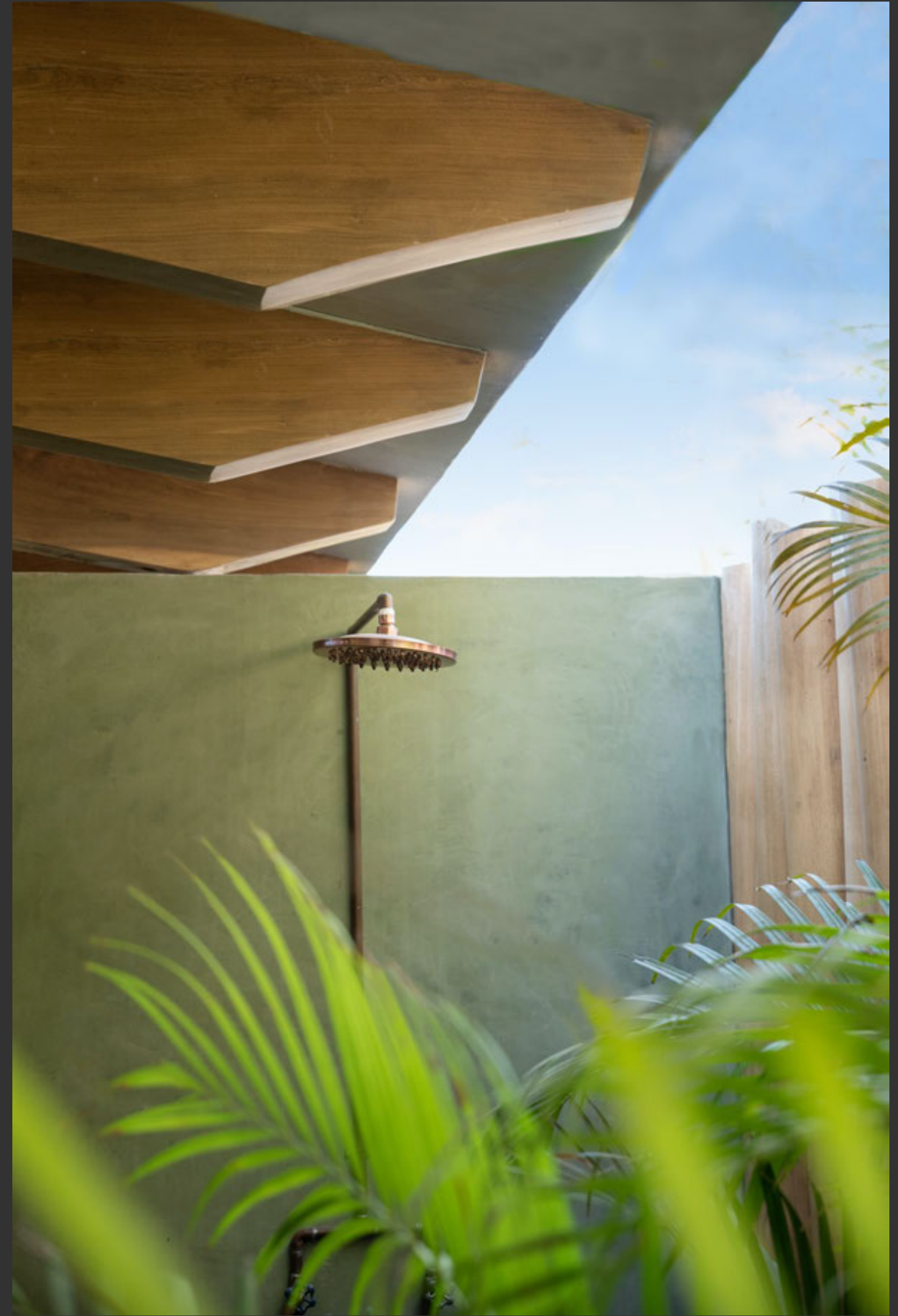












The best kept secret in the middle of Punta Mita...



R E S E R V A
H A C I E N D A D E M I T A

reservapuntamita.com

Developed by Zeiba with a special focus on responsible development that caters to families and the Punta Mita Lifestyle.

Proprietary and Confidential
Information and terms subject to change without notice.

RESERVA 1 was delivered in late 2020.

